

MONTHLY MEMBERSHIP PROGRESS REPORT

LOCATION TEXAS

District 2 T3

Results as of: 5/31/2023

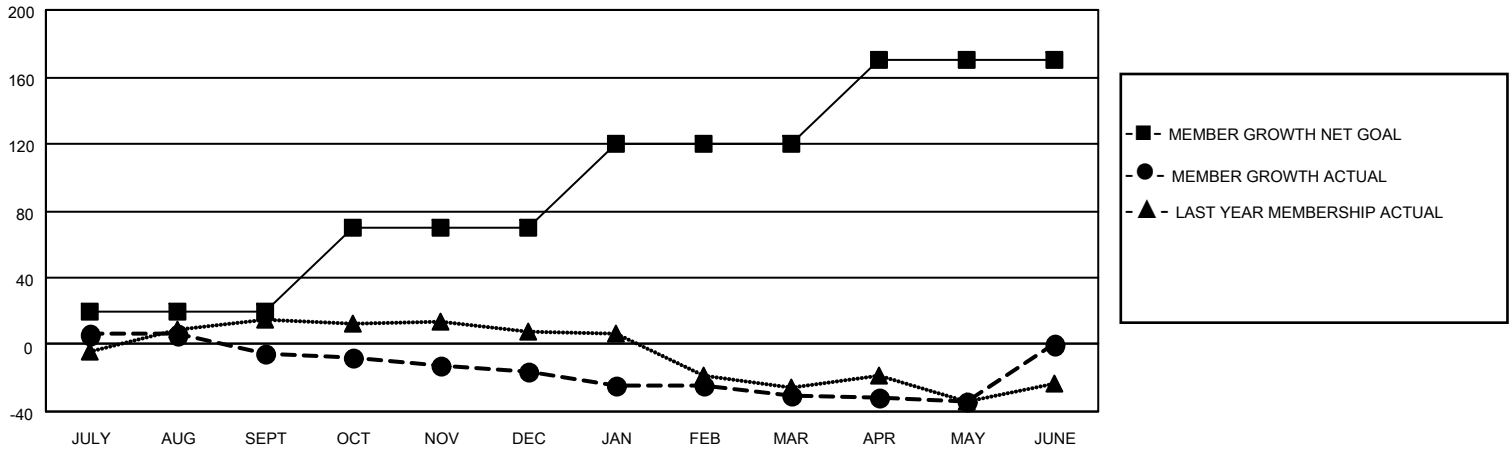
Clubs			
RESULTS FOR 2022-2023			
QUARTER	NEW CLUB GOAL	NEW CLUBS	DROPPED CLUBS
JULY/AUG/SEPT	0	0	0
OCT/NOV/DEC	1	0	0
JAN/FEB/MAR	0	0	0
APR/MAY/JUNE	0	0	0

Members			
RESULTS FOR 2022-2023			
QUARTER	MEMBER GROWTH NET GOAL	MEMBER GROWTH ACTUAL	DROPPED MEMBERS ACTUAL (including transfers)
JULY/AUG/SEPT	20	42	35
OCT/NOV/DEC	50	17	28
JAN/FEB/MAR	50	17	30
APR/MAY/JUNE	50	14	16

GOALS AND ACTUAL NEW CLUBS CUMULATIVE



GOALS AND ACTUAL MEMBERS CUMULATIVE



DROPPED CLUBS: 0

18 CLUBS OF 33 ADDED 1 OR MORE NEW MEMBERS

GENDER DISTRIBUTION

MALE	345 (50.74%)
FEMALE	334 (49.12%)
NON BINARY	0 (0.00%)
PREFER NOT TO ANSWER	1 (0.15%)

DROPPED MEMBERS

[CLICK HERE FOR CUMULATIVE MEMBERSHIP DATA](#)

DECEASED	12
CLUB CANCELLED	0
OTHER	97
TOTAL	109

TOTAL FAMILY UNIT MEMBERS	100
FAMILY MEMBERS PAYING HALF DUES	51